

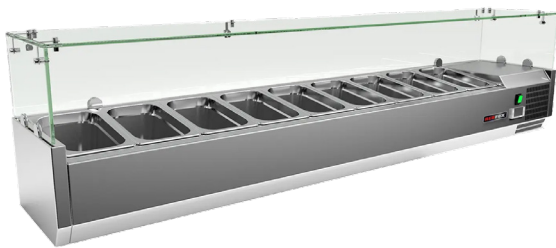
Technical data sheet



Product features

Cooling display 8 x GN 1/4

Model	SAP Code	00013360
MCH 4180	A group of articles - web	Cooling and freezing tables



- Material: Stainless steel
- GN / EN size in device: GN 1/4
- Number of GN / EN: 8
- Minimum device temperature [°C]: 2
- Maximum device temperature [°C]: 8
- Insulation thickness [mm]: 40
- Unit: Right

SAP Code	00013360	Number of GN / EN	8
Net Width [mm]	1800	GN / EN size in device	GN 1/4
Net Depth [mm]	335	GN device depth	150
Net Height [mm]	440	Minimum device temperature [°C]	2
Net Weight [kg]	52.00	Maximum device temperature [°C]	8
Power electric [kW]	0.180	Refrigerant	R290
Loading	230 V / 1N - 50 Hz	Refrigerant weight [g]	38.00
Chamber volume [l]	54	Climate class	4

Technical data sheet

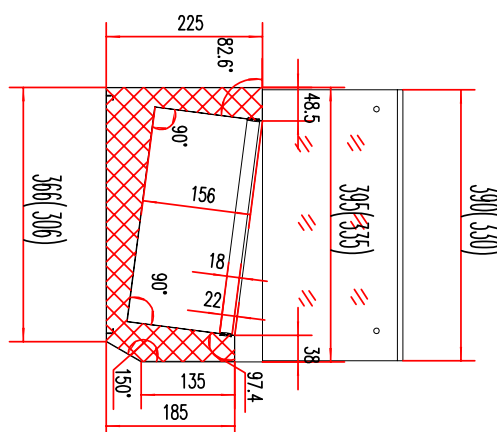
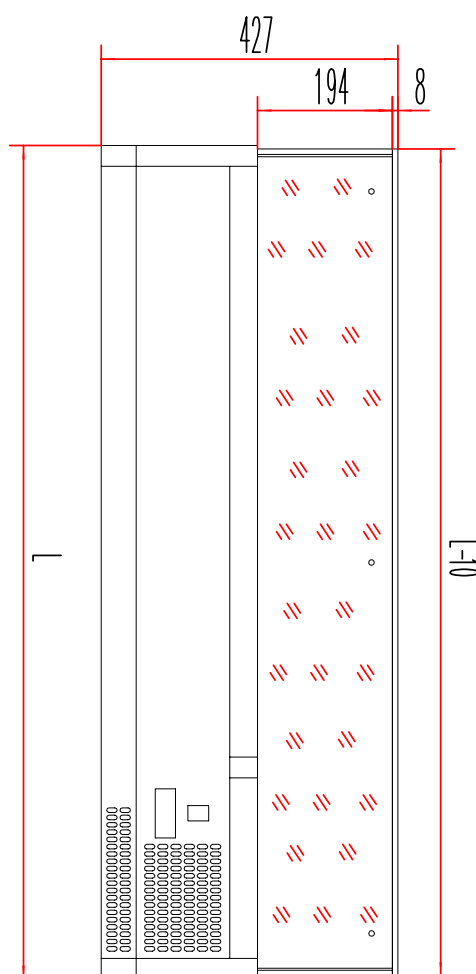


Technical drawing

Cooling display 8 x GN 1/4

Model	SAP Code	00013360
MCH 4180	A group of articles - web	Cooling and freezing tables

MCH3120/MCH4120	1200
MCH3140/MCH4140	1400
MCH3150/MCH4150	1500
MCH3160/MCH4160	1600
MCH3180/MCH4180	1800
MCH4200	2000



Technical data sheet



Technical parameters

Cooling display 8 x GN 1/4

Model	SAP Code	00013360
MCH 4180	A group of articles - web	Cooling and freezing tables

1. SAP Code:

00013360

2. Net Width [mm]:

1800

3. Net Depth [mm]:

335

4. Net Height [mm]:

440

5. Net Weight [kg]:

52.00

6. Gross Width [mm]:

1890

7. Gross depth [mm]:

375

8. Gross Height [mm]:

310

9. Gross Weight [kg]:

57.00

10. Device type:

Electric unit

11. Power electric [kW]:

0.180

12. Loading:

230 V / 1N - 50 Hz

13. Refrigerant:

R290

14. Material:

Stainless steel

15. Exterior color of the device:

Stainless steel

16. Additional information:

GN are not included

17. Device properties 2:

Cooling

18. GN / EN size in device:

GN 1/4

19. Number of internal parts:

8

20. Number of GN / EN:

8

21. GN device depth:

150

22. Chamber volume [l]:

54

23. Insulation thickness [mm]:

40

24. Unit:

Right

25. Minimum device temperature [°C]:

2

26. Maximum device temperature [°C]:

8

27. Refrigerant weight [g]:

38.00

28. Gross Volume [m3]:

0.220

Technical data sheet



Technical parameters

Cooling display 8 x GN 1/4

Model	SAP Code	00013360
MCH 4180	A group of articles - web	Cooling and freezing tables

29. Net Volume [m3]:

0.265

31. Cross-section of conductors CU [mm²]:

0,5

30. Climate class:

4